



DURANT BUSINESS CENTER I

8411 GARVEY DRIVE | RALEIGH, NC 27614

FOR LEASE

1,800 SF FLEX/OFFICE SPACE

LISTING BROKER:

AMY E. CARROLL

919.227.5518 (O) | 919.606.8992 (M)

ACARROLL@TRADEMARKPROPERTIES.COM



TRADEMARK
PROPERTIES

1001 WADE AVENUE SUITE 300, RALEIGH, NC 27605
TRADEMARKPROPERTIES.COM | 919-782-5552

**8411 GARVEY DRIVE
RALEIGH, NC 27616**



PROPERTY HIGHLIGHTS



- » Flex space for lease just off Durant Road in North Raleigh
- » Easily accessible to US-1/Capital Boulevard
- » Approximately 2.5 miles from I-540
- » Suite 117: 1,800 SF - available 12/01/2023
- » 1/3 office, 2/3 warehouse
- » Drive-in door

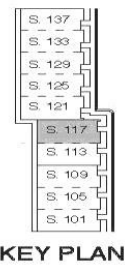
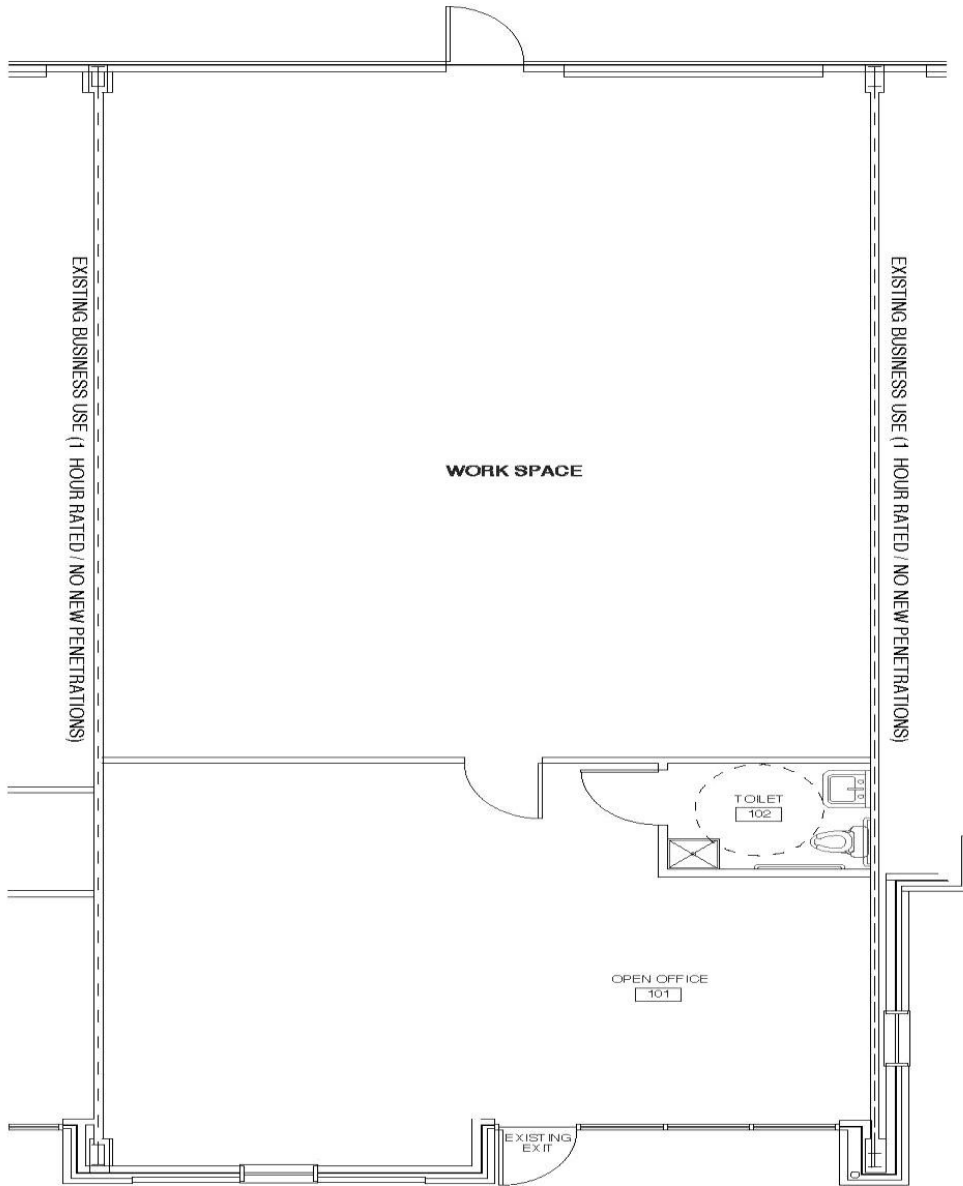
**LEASE RATE:
\$17.95/SF, NNN
TICAM: \$3.53**

**AMY E. CARROLL
919.227.5518 (O) | 919.606.8992 (M)
ACARROLL@TRADEMARKPROPERTIES.COM**

8411 GARVEY DRIVE
RALEIGH, NC 27616



FLOOR PLAN



AMY E. CARROLL
919.227.5518 (O) | 919.606.8992 (M)
ACARROLL@TRADEMARKPROPERTIES.COM

**8411 GARVEY DRIVE
RALEIGH, NC 27616**



RETAIL MAP



**AMY E. CARROLL
919.227.5518 (O) | 919.606.8992 (M)
ACARROLL@TRADEMARKPROPERTIES.COM**

LISTING BROKER:

AMY E. CARROLL

919.227.5518 DIRECT | 919.606.8992 MOBILE
ACARROLL@TRADEMARKPROPERTIES.COM



TRADEMARK
PROPERTIES

THIS IS OUR TRADEMARK

THE INFORMATION CONTAINED HEREIN WAS OBTAINED FROM SOURCES BELIEVED RELIABLE; HOWEVER, TRADEMARK PROPERTIES MAKES NO GUARANTEES, WARRANTIES, OR REPRESENTATIONS AS TO THE COMPLETENESS OR ACCURACY THEREOF. THE PRESENTATION OF THIS PROPERTY IS SUBMITTED SUBJECT TO ERRORS, OMISSIONS, CHANGES OF PRICE OR CONDITIONS PRIOR TO SALE OR LEASE, OR WITHDRAWAL WITHOUT NOTICE.