



110-112 S. MARKET ST.
BENSON, NC 27504

**10,000 SF HISTORIC BUILDING
FEATURING TWO STOREFRONTS**

LISTING BROKER:
KHARMIKA ALSTON
919.645.1431 (D) | 919.672.4905 (M)
KALSTON@TRADEMARKPROPERTIES.COM

FOR SALE

*Address is currently proposed and awaiting final approval from the town.

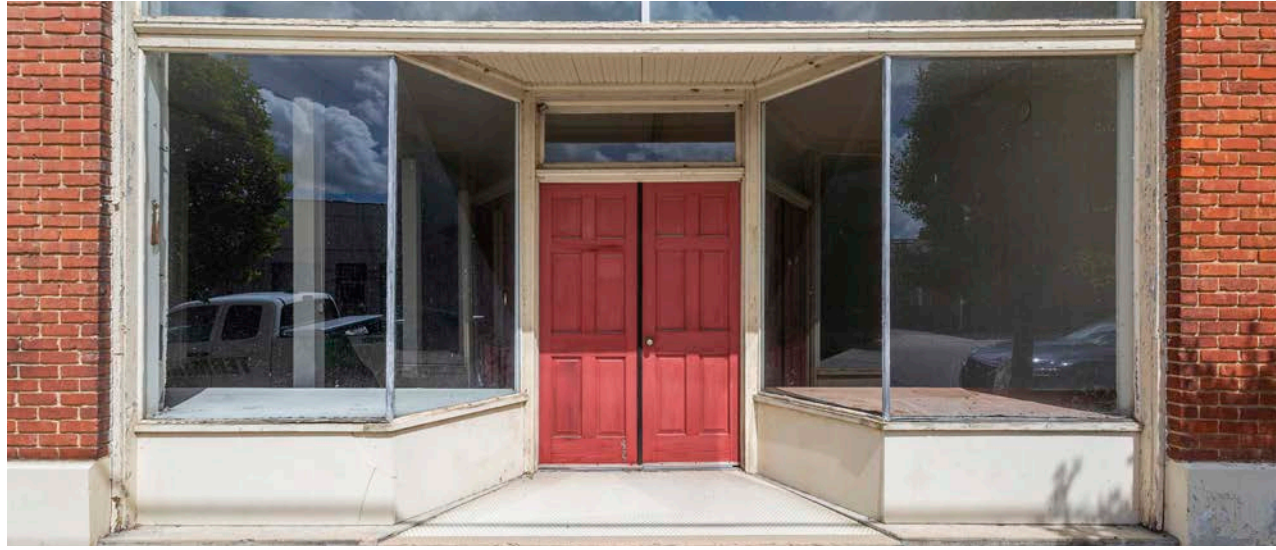
1001 WADE AVENUE SUITE 300, RALEIGH, NC 27605
TRADEMARKPROPERTIES.COM | 919-782-5552

**110-112 S. MARKET STREET
BENSON, NC 27504**

PROPERTY HIGHLIGHTS

- » This 10,000SF two-story building provides two storefronts and ample room for both retail and office.
- » The ground floor features an inviting storefront with large display windows, perfect for showcasing merchandise or creating an appealing entrance for clients.
- » The upper floor offers additional space for offices, storage, or retail expansion.
- » The building retains its classic architectural details, adding to the charm and appeal of the space.
- » High ceilings, large windows, and a stylish facade contribute to a distinctive and memorable business environment.

SALE PRICE: \$375,000



*Address is currently proposed and awaiting final approval from the town.

KHARMIKA ALSTON
919.645.1431 DIRECT | 919.672.4905 MOBILE
KALSTON@TRADEMARKPROPERTIES.COM

1001 WADE AVENUE SUITE 300, RALEIGH, NC 27605
TRADEMARKPROPERTIES.COM | 919.782.5552

**110-112 S. MARKET STREET
BENSON, NC 27504**

PROPERTY HIGHLIGHTS

Nestled in the vibrant downtown district of Benson, this property benefits from high foot traffic and excellent visibility. Surrounded by local businesses, restaurants, and community attractions, it is ideally positioned to attract a steady stream of customers.



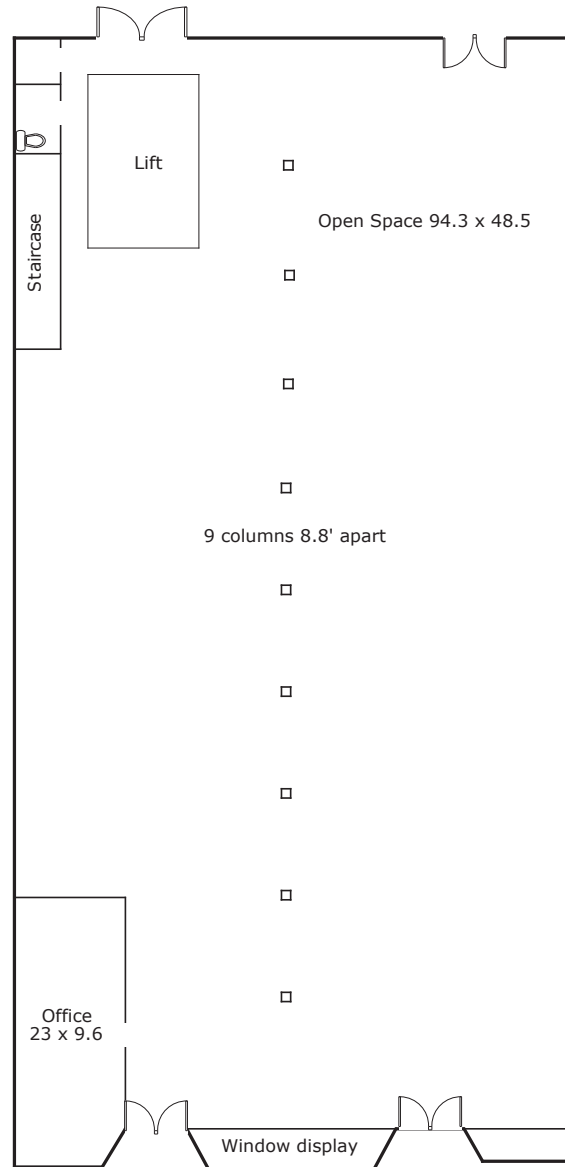
For additional photos and a video click [here](#).

*Address is currently proposed and awaiting final approval from the town.

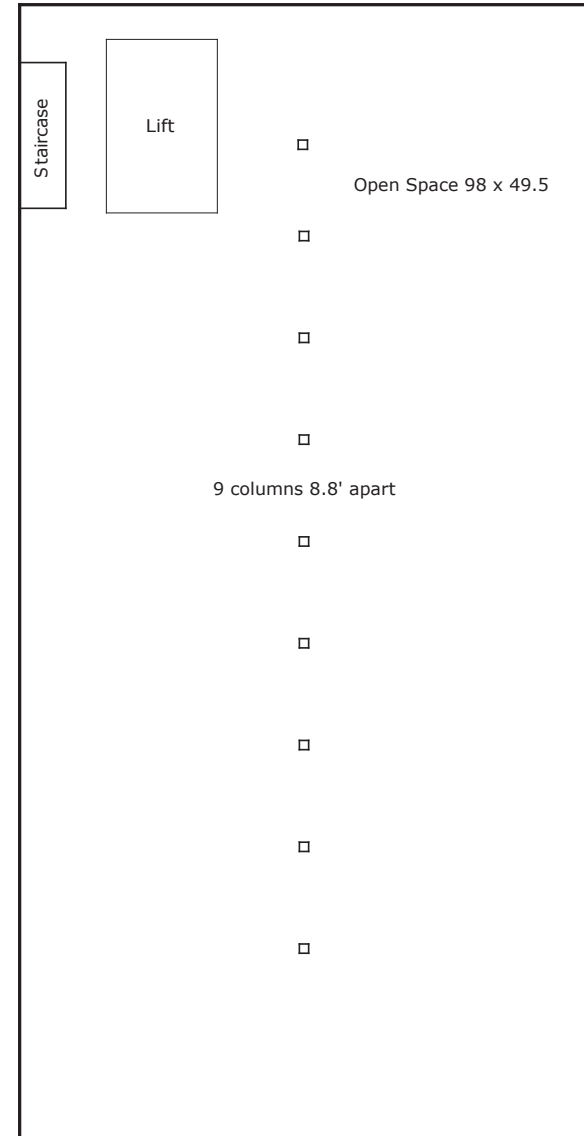
KHARMIKA ALSTON
919.645.1431 DIRECT | 919.672.4905 MOBILE
KALSTON@TRADEMARKPROPERTIES.COM

1001 WADE AVENUE SUITE 300, RALEIGH, NC 27605
TRADEMARKPROPERTIES.COM | 919.782.5552

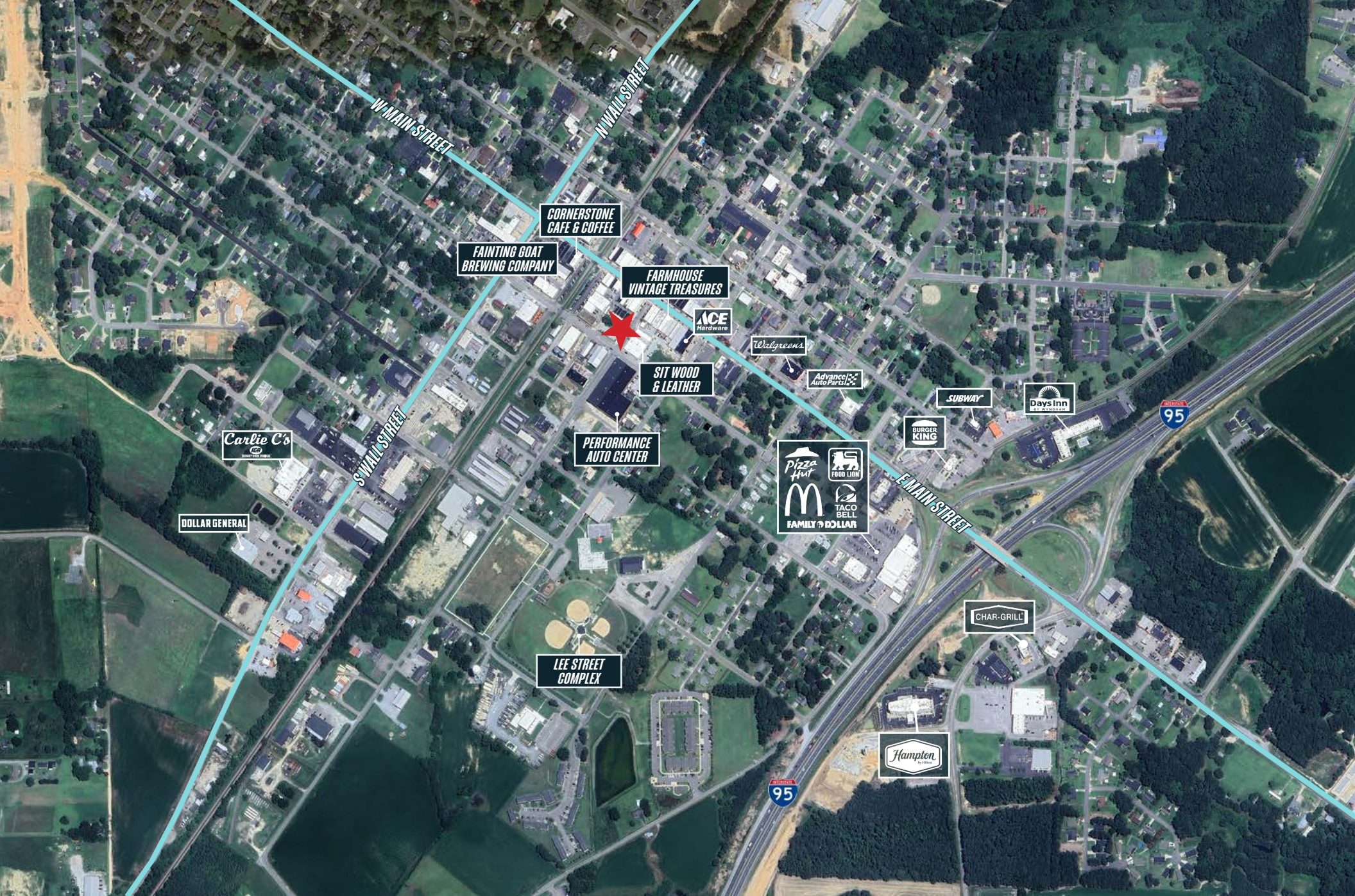
FLOOR PLAN



Main Level



Upper Level



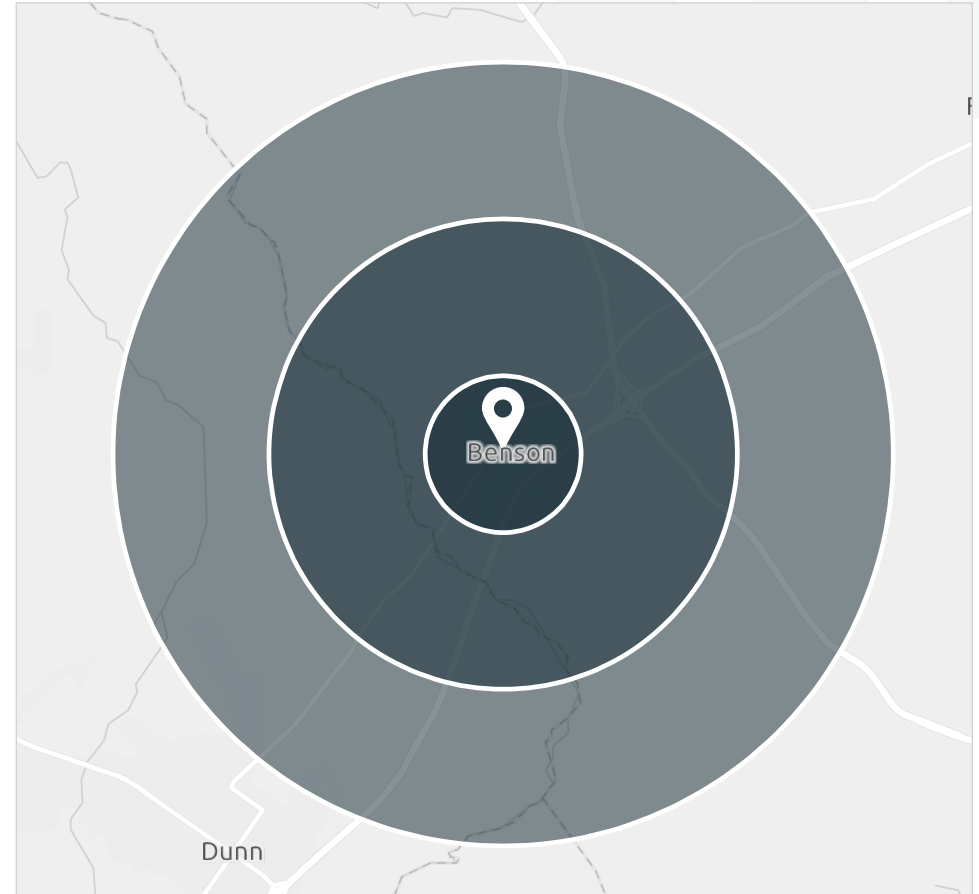
KHARMIKA ALSTON
919.645.1431 DIRECT | 919.672.4905 MOBILE
KALSTON@TRADEMARKPROPERTIES.COM

1001 WADE AVENUE SUITE 300, RALEIGH, NC 27605
TRADEMARKPROPERTIES.COM | 919.782.5552

**110-112 S. MARKET STREET
BENSON, NC 27504**

DEMOGRAPHICS

	1 Mile	3 Miles	5 Miles
2024 POPULATION	3,488	8,153	16,889
2029 POPULATION (PROJECTED)	3,851	8,887	18,200
2024 HOUSEHOLDS	1,416	3,152	6,643
2029 HOUSEHOLDS (PROJECTED)	1,555	3,439	7,194
OWNER-OCCUPIED HOUSING UNITS	757	2,054	4,673
RENTER-OCCUPIED HOUSING UNITS	659	1,098	1,970
2024 AVERAGE HOUSEHOLD INCOME	\$73,060	\$83,153	\$82,583



EXCLUSIVE BROKER:

KHARMIKA ALSTON

919.645.1431 DIRECT | 919.672.4905 MOBILE
KALSTON@TRADEMARKPROPERTIES.COM



TRADEMARK
PROPERTIES

THIS IS OUR TRADEMARK

THE INFORMATION CONTAINED HEREIN WAS OBTAINED FROM SOURCES BELIEVED RELIABLE; HOWEVER, TRADEMARK PROPERTIES MAKES NO GUARANTEES, WARRANTIES, OR REPRESENTATIONS AS TO THE COMPLETENESS OR ACCURACY THEREOF. THE PRESENTATION OF THIS PROPERTY IS SUBMITTED SUBJECT TO ERRORS, OMISSIONS, CHANGES OF PRICE OR CONDITIONS PRIOR TO SALE OR LEASE, OR WITHDRAWAL WITHOUT NOTICE.